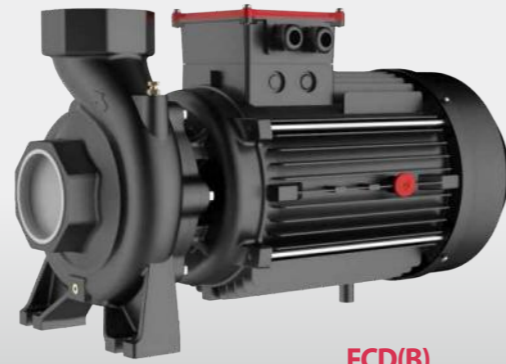


# FCD

n≈3500rpm



FCD



FCD(B)

## Thread port centrifugal pump Bomba centrífuga roscada Pompe centrifuge à orifice fileté Насос с резьбовым отверстием

### DESCRIPTION/DESCRIPCIONES/DESCRIPTION/ОПИСАНИЕ

- ◆ Single impeller centrifugal pumps in thread port design.
  - ◆ Original design by FANCY (patented no. 201530476290.2).
  - ◆ Suitable to cover any capacity request.
  - ◆ YE3 high efficient motor, with protection IP55 class F.
  - ◆ Impeller in brass or cast iron.
  - ◆ Suction and discharge port in G20 thread.
  - ◆ Shaft in stainless steel AISI 304.
  - ◆ Quality bearing, wear resistance mechanical seal.
- ◆ Bombas centrífugas de impulsor simple en diseño.
  - ◆ Diseño original de FANCY (patentado no. 201530476290.2).
  - ◆ Adecuado para cubrir cualquier solicitud de capacidad.
  - ◆ Motor de alta eficiencia YE3, con protección IP55 clase F.
  - ◆ Impulsor en latón o hierro fundido.
  - ◆ Puerto de succión y descarga en rosca G20.
  - ◆ Eje en acero inoxidable 304.
  - ◆ Rodamiento de calidad y cierre mecánico personalizado.
- ◆ Pompes centrifuges à une roue en version orifice fileté.
  - ◆ Design original par FANCY (breveté no.201530476290.2).
  - ◆ Convient pour couvrir toute demande de capacité.
  - ◆ Moteur haute efficacité YE3, avec protection IP55 classe F.
  - ◆ Roue en laiton ou en fonte.
  - ◆ Orifice d'aspiration et de refoulement en filetage G20.
  - ◆ Arbre en acier inoxydable 304.
  - ◆ Roulement qualité, joint mécanique de résistance à l'usure.
- ◆ Центробежные насосы с резьбовым соединением.
  - ◆ Оригинальный дизайн FANCY (патент № 201530476290.2).
  - ◆ Подходит для покрытия любого запроса мощности.
  - ◆ Высокоэффективный двигатель YE3 с классом защиты IP55 F.
  - ◆ Рабочее колесо из латуни или чугуна.
  - ◆ Всасывающий и нагнетательный патрубки с резьбой G20.
  - ◆ Вал из нержавеющей стали AISI 304.
  - ◆ Качественный подшипник, износостойкое механическое уплотнение.

### APPLICATIONS/APLICACIONES/APPLICATIONS/ПРИЛОЖЕНИЯ

- ◆ The high efficiency and continuous duty capabilities makes these pumps ideal for use in activities such as flood and spray irrigation, drawing water from lakes, rivers and wells.
- ◆ La alta eficiencia y las capacidades de servicio continuo hacen que estas bombas ideal para su uso en actividades como riego por inundación y aspersión, extracción de agua de lagos, ríos y pozos.
- ◆ Le rendement élevé et les capacités de service continu font de ces pompes idéal pour une utilisation dans des activités telles que l'irrigation par inondation et par pulvérisation, le puisage de l'eau des lacs, des rivières et des puits.
- ◆ Высокая эффективность и возможность непрерывной работы делают эти насосы идеально подходят для использования в таких видах деятельности, как орошение затоплением и распылением, забор воды из озер, рек и колодцев.

### USING/UTILIZACIÓN/UTILISATION/ИСПОЛЬЗОВАНИЕ

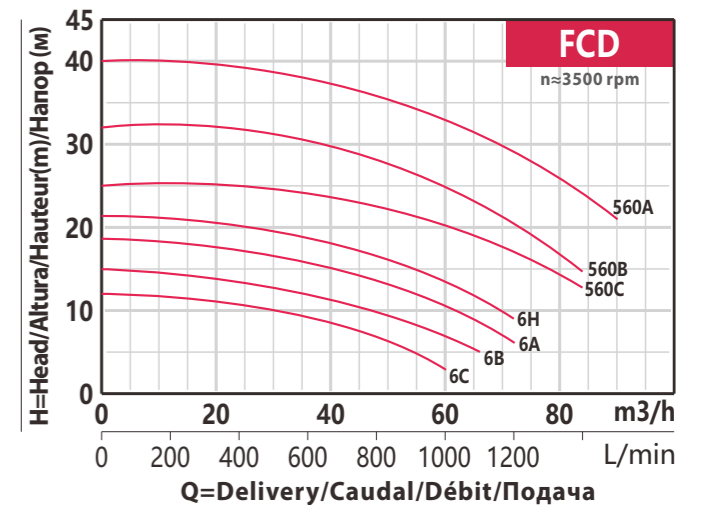
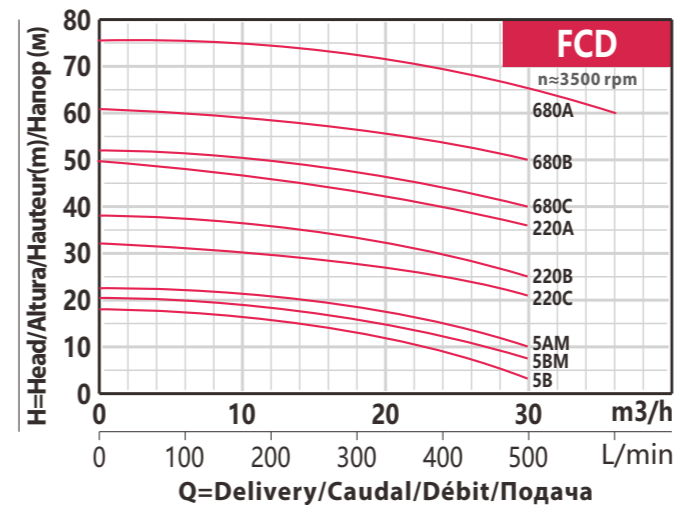
- ◆ Liquid temperature between -10°C and +120°C
- ◆ Ambient temperature between -10°C and +50°C
- ◆ Max. working pressure 16 bar
- ◆ Continuous service S1
- ◆ Temperatura del líquido de -10 °C hasta +120 °C
- ◆ Temperatura ambiente de -10 °C hasta +50°C
- ◆ Presión máxima en el cuerpo de la bomba 16 bar
- ◆ Funcionamiento continuo S1
- ◆ Température du liquide entre -10 °C et +120 °C
- ◆ Température ambiante entre -10 °C et +50 °C
- ◆ Max. pression de service 16 bar
- ◆ Service continu S1
- ◆ Температура жидкости от -10°C до +120°C
- ◆ Температура окружающей среды от -10°C до +50°C
- ◆ Макс. рабочее давление 16 бар
- ◆ Непрерывное обслуживание S1

### TECHNICAL DATA/DATOS TÉCNICOS/DONNÉES TECHNIQUES/ТЕХНИЧЕСКИЕ ДАННЫЕ

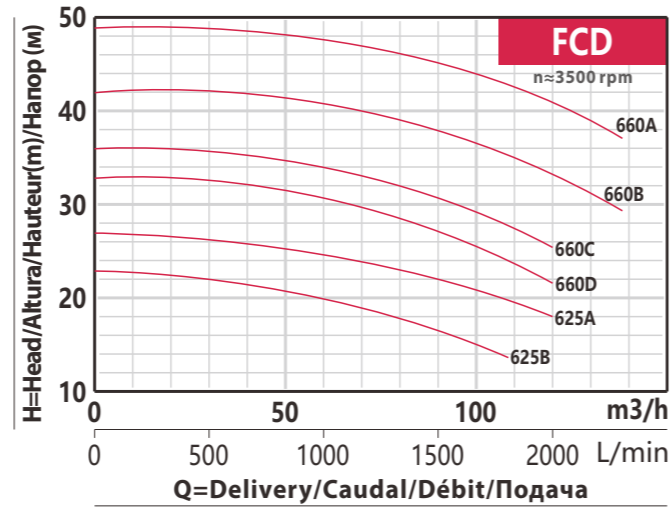
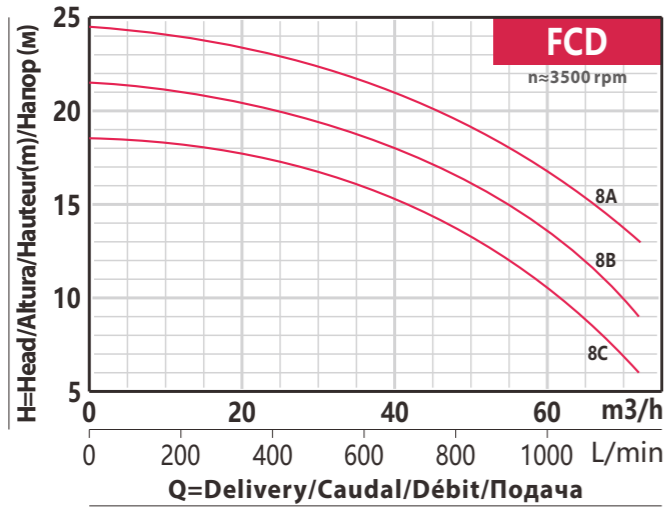
60Hz n≈3500l/min

| MODEL<br>MODELO<br>MODÈLE<br>МОДЕЛЬ | DN       | Impeller | Power<br>Potencia<br>Puissance<br>Мощность | 380V | Q=Delivery/Caudal/Débit/Поддача |      |   |      |      |      |      |      |      |      |      |      |      |      |      |      |      |      |      |      |      |      |      |      |   |  |
|-------------------------------------|----------|----------|--|------|---------------------------------|------|---|------|------|------|------|------|------|------|------|------|------|------|------|------|------|------|------|------|------|------|------|------|---|--|
|                                     |          |          |  |      | GPM                             | 0    | 26  | 40   | 53   | 66   | 79   | 93   | 106  | 132  | 159  | 185  | 211  | 238  | 264  | 291  | 317  | 370  | 396  | 476  | 529  | 608  |      |      |   |  |
| 1-ph                                | 3-ph     | mm       | mm   | kw   | hp                              | Amp. | l/min   | 0    | 100  | 150  | 200  | 250  | 300  | 350  | 400  | 500  | 600  | 700  | 800  | 900  | 1000 | 1100 | 1200 | 1400 | 1500 | 1800 | 2000 | 2300 |   |  |
|                                     |          |          |  |      |                                 |      | H=Head(m)/Altura(m)/Hauteur(m)/Общий напор в метрах водяного столба (м) |      |      |      |      |      |      |      |      |      |      |      |      |      |      |      |      |      |      |      |      |      |   |  |
| FCDm 5B                             | FCD 5B   | 50x50    | Brass                                      | 0.75 | 1                               | 1.7  | 17.9  | 16.5 | 16.4 | 15   | 14   | 13.5 | 11.4 | 9.5  | 5    | -    | -    | -    | -    | -    | -    | -    | -    | -    | -    | -    | -    | -    | - |  |
| FCDm 5BM                            | FCD 5BM  | 50x50    | Brass                                      | 1.1  | 1.5                             | 2.4  | 20.2  | 19.2 | 19   | 18   | 17   | 16   | 14   | 12   | 7.5  | -    | -    | -    | -    | -    | -    | -    | -    | -    | -    | -    | -    | -    | - |  |
| FCDm 5AM                            | FCD 5AM  | 50x50    | Brass                                      | 1.5  | 2                               | 3.2  | 22.5  | 22   | 21.5 | 21   | 20   | 18.5 | 16.6 | 14.5 | 10   | -    | -    | -    | -    | -    | -    | -    | -    | -    | -    | -    | -    | -    | - |  |
| FCDm 220C                           | FCD 220C | 50x50    | Brass                                      | 2.2  | 3                               | 4.6  | 32  | 31   | 30.5 | 30   | 29   | 28   | 26   | 24   | 21   | -    | -    | -    | -    | -    | -    | -    | -    | -    | -    | -    | -    | -    | - |  |
| FCDm 220B                           | FCD 220B | 50x50    | Brass                                      | 3    | 4                               | 6    | 38  | 37   | 36.5 | 36   | 34.8 | 33.5 | 31.2 | 29   | 25   | -    | -    | -    | -    | -    | -    | -    | -    | -    | -    | -    | -    | -    | - |  |
| -                                   | FCD 220A | 50x50    | Brass                                      | 4    | 5.5                             | 7.8  | 49  | 48   | 47   | 46   | 44.8 | 43.5 | 41.5 | 39.5 | 36   | -    | -    | -    | -    | -    | -    | -    | -    | -    | -    | -    | -    | -    | - |  |
| FCDm 680C                           | FCD 680C | 50x50    | Brass                                      | 4    | 5.5                             | 7.8  | 52  | 51   | 50.8 | 50.3 | 49   | 47.5 | 45   | 43   | 40   | -    | -    | -    | -    | -    | -    | -    | -    | -    | -    | -    | -    | -    | - |  |
| -                                   | FCD 680B | 50x50    | Brass                                      | 5.5  | 7.5                             | 10.6 | 61  | 60   | 59.5 | 59   | 58.5 | 57   | 55   | 52.5 | 50   | -    | -    | -    | -    | -    | -    | -    | -    | -    | -    | -    | -    | -    | - |  |
| -                                   | FCD 680A | 50x50    | Brass                                      | 7.5  | 10                              | 14.4 | 75  | 74.5 | 74.3 | 74   | 73.5 | 72.5 | 71   | 68.5 | 65   | 60   | -    | -    | -    | -    | -    | -    | -    | -    | -    | -    | -    | -    | - |  |
| FCDm 6C                             | FCD 6C   | 80x80    | Brass                                      | 1.1  | 1.5                             | 2.4  | 11.9  | -    | -    | 11.7 | 11.5 | 11.3 | 11   | 10.7 | 10.2 | 9.2  | 8    | 6.7  | 5    | 3    | -    | -    | -    | -    | -    | -    | -    | -    | - |  |
| FCDm 6B                             | FCD 6B   | 80x80    | Brass                                      | 1.5  | 2                               | 3.2  | 14.7  | -    | -    | 14.5 | 14.3 | 14   | 13.8 | 13.5 | 12.8 | 12   | 11   | 9.7  | 8.2  | 6.7  | 5    | -    | -    | -    | -    | -    | -    | -    | - |  |
| FCDm 6A                             | FCD 6A   | 80x80    | Brass                                      | 2.2  | 3                               | 4.6  | 18.5  | -    | -    | 18.1 | 18   | 17.8 | 17.5 | 17.2 | 16.8 | 16   | 15   | 13.8 | 12.2 | 10.5 | 8.3  | 6    | -    | -    | -    | -    | -    | -    | - |  |
| FCDm 6H                             | FCD 6H   | 80x80    | Brass                                      | 3    | 4                               | 6    | 21.5  | -    | -    | 21   | 20.9 | 20.7 | 20.4 | 20   | 19.5 | 18.8 | 17.8 | 16.5 | 15   | 13.5 | 11.2 | 9    | -    | -    | -    | -    | -    | -    | - |  |
| FCDm 560C                           | FCD 560C | 80x80    | C.Iron                                     | 4    | 5.5                             | 7.8  | 25  | -    | -    | -    | -    | -    | -    | -    | -    | 24.1 | 24   | 22.5 | 21.3 | 19.8 | 18.3 | 16.8 | 12.8 | -    | -    | -    | -    | -    | - |  |
| -                                   | FCD 560B | 80x80    | C.Iron                                     | 5.5  | 7.5                             | 10.6 | 32  | -    | -    | -    | -    | -    | -    | -    | -    | 30.6 | 30   | 28   | 26.6 | 24.8 | 22.7 | 20.5 | 14.8 | -    | -    | -    | -    | -    | - |  |
| -                                   | FCD 560A | 80x80    | C.Iron                                     | 7.5  | 10                              | 14.4 | 40  | -    | -    | -    | -    | -    | -    | -    | -    | 38   | 37   | 36   | 34.4 | 32.6 | 30.8 | 29   | 24   | 21   | -    | -    | -    | -    | - |  |
| FCDm 8C                             | FCD 8C   | 100x100  | Brass                                      | 2.2  | 3                               | 4.6  | 18.5  | -    | -    | 18.1 | 18   | 17.8 | 17.5 | 17.2 | 16.8 | 16   | 15   | 13.8 | 12.2 | 10.5 | 8.3  | 6    | -    | -    | -    | -    | -    | -    | - |  |
| FCDm 8B                             | FCD 8B   | 100x100  | Brass                                      | 3    | 4                               | 6    | 21.5  | -    | -    | 21   | 20.9 | 20.7 | 20.4 | 20   | 19.5 | 18.8 | 17.8 | 16.5 | 15   | 13.5 | 11.2 | 9    | -    | -    | -    | -    | -    | -    | - |  |
| FCDm 8A                             | FCD 8A   | 100x100  | Brass                                      | 4    | 5.5                             | 7.8  | 24.5  | -    | -    | 24   | 23.8 | 23.5 | 23.3 | 23   | 22.5 | 21.8 | 20.8 | 19.5 | 18.3 | 16.8 | 15   | 13   | -    | -    | -    | -    | -    | -    | - |  |
| -                                   | FCD 625B | 100x100  | C.Iron                                     | 5.5  | 7.5                             | 10.6 | 23  | -    | -    | -    | -    | -    | -    | -    | -    | -    | 21.3 | 20.9 | 20.3 | 19.7 | 19   | 17.5 | 16.7 | 13.7 | -    | -    | -    | -    | - |  |
| -                                   | FCD 625A | 100x100  | C.Iron                                     | 7.5  | 10                              | 14.4 | 27  | -    | -    | -    | -    | -    | -    | -    | -    | -    | 26   | 25.6 | 25.2 | 24.8 | 24.5 | 23   | 22.5 | 20   | 18   | -    | -    | -    | - |  |
| -                                   | FCD 660D | 100x100  | C.Iron                                     | 9.2  | 12.5                            | 17.6 | 33  | -    | -    | -    | -    | -    | -    | -    | -    | -    | -    | 31.5 | 31   | 30.5 | 30   | 28   | 27.1 | 24   | 21.5 | -    | -    | -    | - |  |
| -                                   | FCD 660C | 100x100  | C.Iron                                     | 11   | 15                              | 20.6 | 36  | -    | -    | -    | -    | -    | -    | -    | -    | -    | -    | 34.5 | 34   | 33.5 | 33   | 31.5 | 30.8 | 28   | 25.5 | -    | -    | -    | - |  |
| -                                   | FCD 660B | 100x100  | C.Iron                                     | 15   | 20                              | 27.9 | 42  | -    | -    | -    | -    | -    | -    | -    | -    | -    | -    | 41   | 40.7 | 40.4 | 40   | 38.5 | 37.8 | 35   | 33   | 29.5 | -    | -    | - |  |
| -                                   | FCD 660A | 100x100  | C.Iron                                     | 18.5 | 25                              | 34.2 | 49  | -    | -    | -    | -    | -    | -    | -    | -    | -    | -    | 48   | 47.7 | 47.4 | 47   | 46   | 45   | 42   | 41   | 37   | -    | -    | - |  |

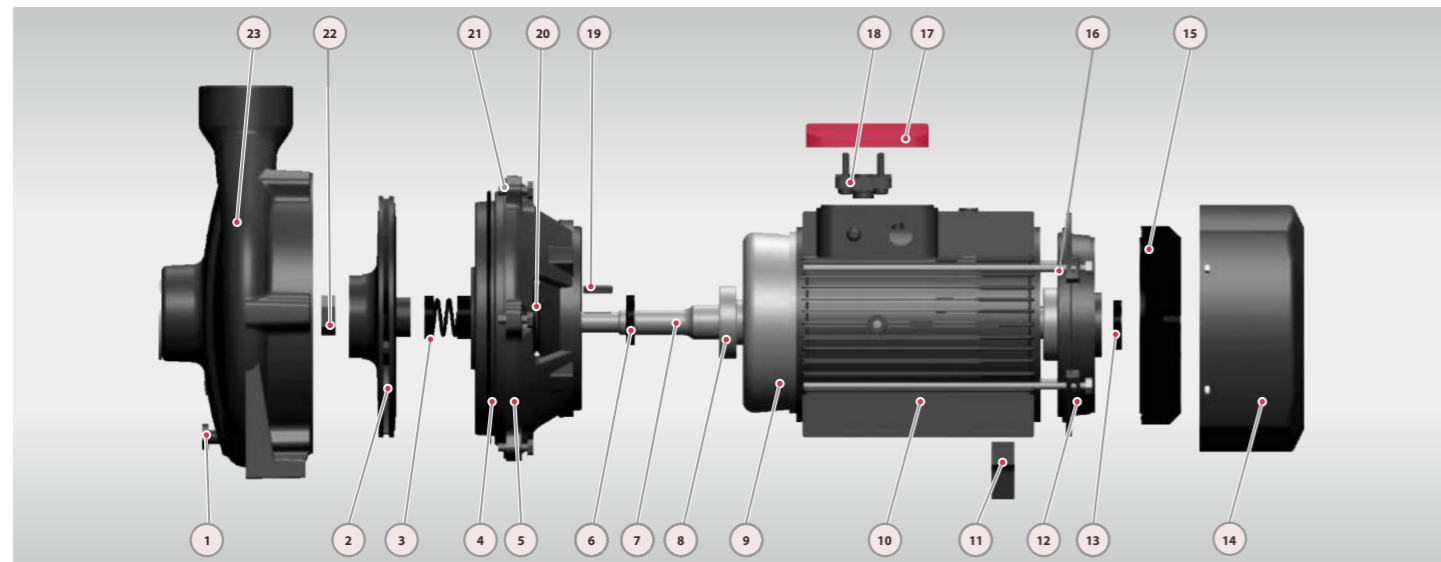
PERFORMANCE CURVE/CURVA/COURBE/КРИВАЯ



PERFORMANCE CURVE/CURVA/COURBE/КРИВАЯ

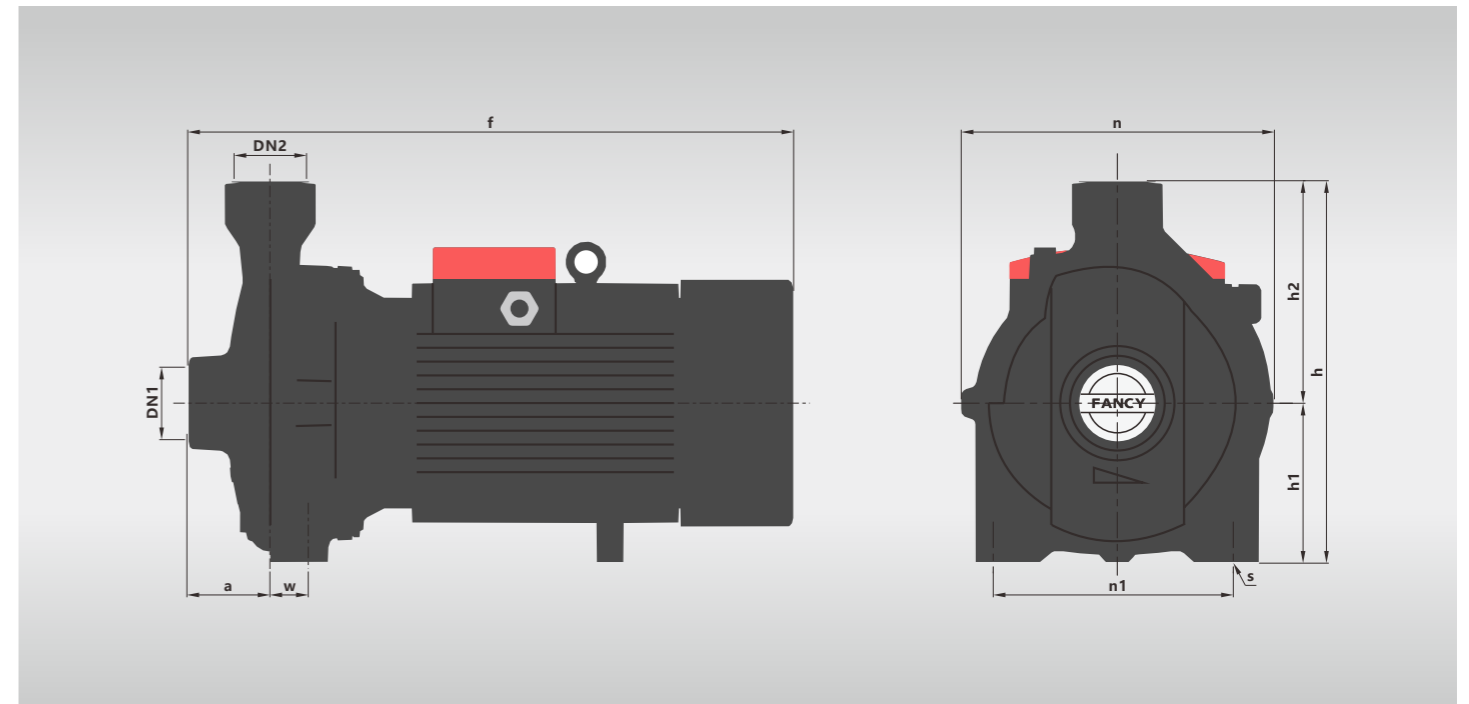


MATERIAL DETAILS/DETALLES MATERIAL/DÉTAILS MATÉRIEL/ДЕТАЛИ МАТЕРИАЛА



| No. | Description<br>Descripción<br>Description<br>Описание                    | Material<br>Material<br>Matériel<br>Материал                          | No. | Description<br>Descripción<br>Description<br>Описание                       | Material<br>Material<br>Matériel<br>Материал          | No. | Description<br>Descripción<br>Description<br>Описание                              | Material<br>Material<br>Matériel<br>Материал                                   |
|-----|--|---|-----|---|---|-----|--|--|
| 1   | Release Valve<br>Tapón Cebado<br>Soupape de décharge<br>Выпускной клапан | Brass<br>Latón<br>Laiton<br>Латунь                                    | 9   | Wiring<br>Alambrado<br>Câblage<br>Электропроводка                           | 100% copper<br>100% cobre<br>100% cuivre<br>100% медь | 17  | Terminal Box<br>Caja de Bornas<br>Boîte à bornes<br>Клеммная коробка               | Aluminum<br>Aluminio<br>Aluminium<br>Алюминий                                  |
| 2   | Impeller<br>Impulsor<br>Roue<br>Импелсор                                 | Brass<br>Latón<br>Laiton<br>Латунь                                    | 10  | Motor Case<br>Cuerpo de Motor<br>Boîtier du moteur<br>Корпус двигателя      | Aluminum<br>Aluminio<br>Aluminium<br>Алюминий         | 18  | Terminal Board<br>Tablero de Bornas<br>Terminal Board<br>Клеммная колодка          | Plastic<br>Plástico<br>Plastique<br>Пластик                                    |
| 3   | Seal<br>Cierre<br>Garniture<br>Тюлень                                    | SiC&Carbon<br>SiC&Grafito<br>SiC&Carbon<br>SiC&Углерод                | 11  | Support Foot<br>Soporte Pie<br>Pied de support<br>Опорная нога              | Plastic<br>Plástico<br>Plastique<br>Пластик           | 19  | Impeller Key<br>Chaveta Impulsor<br>Clé de roue<br>Шпонка крыльчатки               | Iron<br>Hierro<br>Le fer<br>Железо   |
| 4   | O-ring<br>Junta Tórica<br>Joint torique<br>Хунта Торика                  | Rubber<br>Caucho<br>Caoutchouc<br>Резина                              | 12  | Back Cover<br>Tapa Trasera<br>Quatrième couverture<br>Задняя обложка        | Cast iron<br>Fundición<br>Fonte<br>Чугун              | 20  | Water Deflector<br>Deflector de agua<br>Déflecteur d'eau<br>Дефлектор воды         | Rubber<br>Caucho<br>Caoutchouc<br>Резина                                       |
| 5   | Connection<br>Conexión<br>Raccordement<br>Подключение                    | Cast iron<br>Fundición<br>Fonte<br>Чугун                              | 13  | Reinforced Seal<br>Sello Reforzado<br>Joint renforcé<br>Усиленное           | Rubber<br>Caucho<br>Caoutchouc<br>Резина              | 21  | Connection Bolt<br>Perno de conexión<br>Boulon de connexion<br>Соединительный болт | Steel<br>Acero<br>Acier<br>Сталь   |
| 6   | Reinforced Seal<br>Sello Reforzado<br>Joint renforcé<br>Усиленное        | Rubber<br>Caucho<br>Caoutchouc<br>Резина                              | 14  | Fan Cover<br>Tapa Ventilador<br>Couvercle ventilateur<br>Крышка вентилятора | Aluminum<br>Aluminio<br>Aluminium<br>Алюминий         | 22  | Impeller Nut<br>Tuercas de Impulsor<br>Ecrou de roue<br>Гайка рабочего колеса      | Galvanized Steel<br>Acero Galvanizado<br>Acier Galvanisé<br>Оцинкованная сталь |
| 7   | Shaft<br>Eje<br>Arbre<br>Вал   | SUS304<br>Inox304<br>Inox304<br>СУС304                                | 15  | Fan Ventilador<br>Ventilateur<br>Вентилятор                                 | Plastic<br>Plástico<br>Plastique<br>Пластик           | 23  | Pump Case<br>Cuerpo<br>Boîtier<br>Корпус насоса                                    | Cast iron<br>Fundición<br>Fonte<br>Чугун                                       |
| 8   | Bearing<br>Cojinete<br>Palier<br>Подшипник                               | Ball bearing<br>Bola rodamiento<br>Roulement bille<br>Шарикоподшипник | 16  | Through Bolt<br>Perno pasante<br>Traversant le boulon<br>Сквозной болт      | Steel<br>Acero<br>Acier<br>Сталь                      |     |  |  |

DIMENSIONS AND N.W./DIMENSIONES Y PESOS/DIMENSIONS ET POIDS/РАЗМЕРЫ И ВЕС



| MODEL<br>MODELO<br>MODÈLE<br>МОДЕЛЬ |          | DIMENSIONS/DIMENSIONES<br>DIMENSIONS/РАЗМЕРЫ<br>mm |     |    |     |     |     |     |     |     |    | NW<br>kg |      |      |
|-------------------------------------|----------|--|-----|----|-----|-----|-----|-----|-----|-----|----|----------|------|------|
| 1-ph                                | 3-ph     | DN1  | DN2 | a  | f   | h   | h1  | h2  | n   | n1  | w  | s        | 1-ph | 3-ph |
| FCD 5B                              | FCD 5B   | 50   | 50  | 51 | 398 | 265 | 105 | 160 | 206 | 160 | 1  | 11       | 18   | 17   |
| FCD 5BM                             | FCD 5BM  | 50   | 50  | 51 | 398 | 265 | 105 | 160 | 206 | 160 | 1  | 11       | 19.9 | 18.9 |
| FCD 5AM                             | FCD 5AM  | 50   | 50  | 51 | 398 | 265 | 105 | 160 | 206 | 160 | 1  | 11       | 21.9 | 20.9 |
| FCD 220C                            | FCD 220C | 50   | 50  | 75 | 472 | 322 | 132 | 190 | 245 | 165 | 40 | 14       | 29.5 | 28.5 |
| -                                   | FCD 220B | 50   | 50  | 75 | 472 | 322 | 132 | 190 | 245 | 165 | 40 | 14       | -    | 32.3 |
| -                                   | FCD 220A | 50   | 50  | 75 | 472 | 322 | 132 | 190 | 245 | 165 | 40 | 14       | -    | 41   |
| -                                   | FCD 680C | 50   | 50  | 75 | 535 | 335 | 140 | 195 | 273 | 190 | 40 | 14       | -    | 42   |
| -                                   | FCD 680B | 50   | 50  | 75 | 535 | 335 | 140 | 195 | 273 | 190 | 40 | 14       | -    | 47   |
| -                                   | FCD 680A | 50   | 50  | 75 | 535 | 335 | 140 | 195 | 273 | 190 | 40 | 14       | -    | 51   |
| FCD 6C                              | FCD 6C   | 80   | 80  | 68 | 435 | 317 | 120 | 197 | 240 | 190 | 6  | 12       | 25   | 24   |
| FCD 6B                              | FCD 6B   | 80   | 80  | 68 | 435 | 317 | 120 | 197 | 240 | 190 | 6  | 12       | 26.5 | 25.5 |
| FCD 6A                              | FCD 6A   | 80   | 80  | 68 | 435 | 317 | 120 | 197 | 240 | 190 | 6  | 12       | 27.7 | 26.7 |
| -                                   | FCD 6H   | 80   | 80  | 68 | 435 | 317 | 120 | 197 | 240 | 190 | 6  | 12       | -    | 35   |
| -                                   | FCD 560C | 80   | 80  | 79 | 578 | 372 | 163 | 209 | 263 | 212 | 32 | 16       | -    | 52   |
| -                                   | FCD 560B | 80   | 80  | 79 | 578 | 372 | 163 | 209 | 263 | 212 | 32 | 16       | -    | 64   |
| -                                   | FCD 560A | 80   | 80  | 79 | 578 | 372 | 163 | 209 | 263 | 212 | 32 | 16       | -    | 71   |
| FCD 8C                              | FCD 8C   | 100  | 100 | 70 | 482 | 322 | 120 | 202 | 245 | 190 | 30 | 14       | 31   | 30   |
| -                                   | FCD 8B   | 100  | 100 | 70 | 482 | 322 | 120 | 202 | 245 | 190 | 30 | 14       | -    | 35   |
| -                                   | FCD 8A   | 100  | 100 | 70 | 482 | 322 | 120 | 202 | 245 | 190 | 30 | 14       | -    | 40   |
| -                                   | FCD 625B | 100  | 100 | 85 | 593 | 373 | 163 | 210 | 267 | 212 | 32 | 16       | -    | 68   |
| -                                   | FCD 625A | 100  | 100 | 85 | 593 | 373 | 163 | 210 | 267 | 212 | 32 | 16       | -    | 74   |
| -                                   | FCD 660D | 100  | 100 | 85 | 605 | 415 | 186 | 229 | 305 | 222 | 49 | 16       | -    | 90   |
| -                                   | FCD 660C | 100  | 100 | 85 | 605 | 415 | 186 | 229 | 305 | 222 | 49 | 16       | -    | 106  |
| -                                   | FCD 660B | 100  | 100 | 85 | 605 | 415 | 186 | 229 | 305 | 222 | 49 | 16       | -    | 134  |
| -                                   | FCD 660A | 100  | 100 | 85 | 605 | 415 | 186 | 229 | 305 | 222 | 49 | 16       | -    | 155  |